



Fig 1 Site location

WEST2112DBA22#01

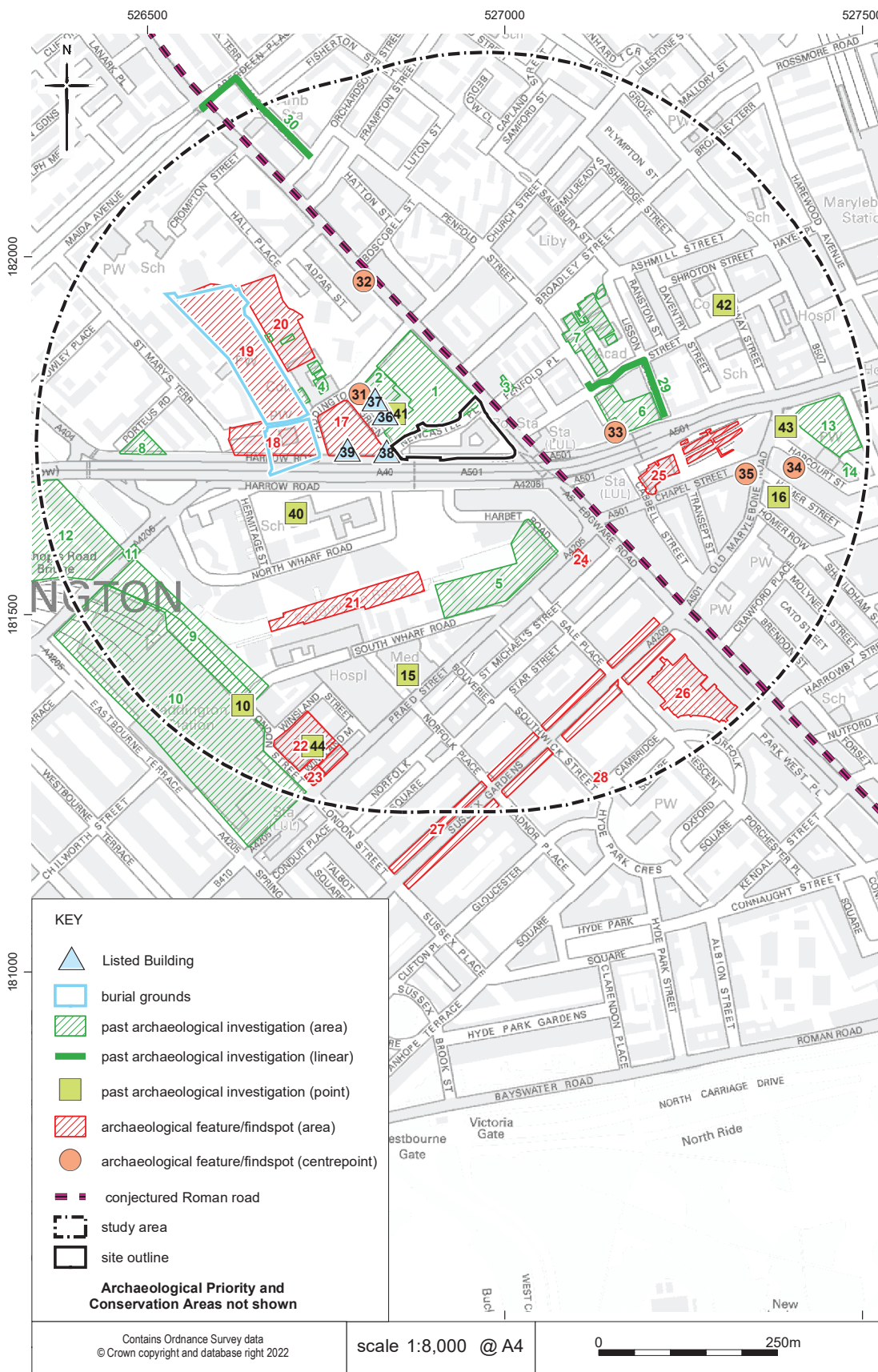


Fig 2 Historic environment features map

WEST2112DBA22#02

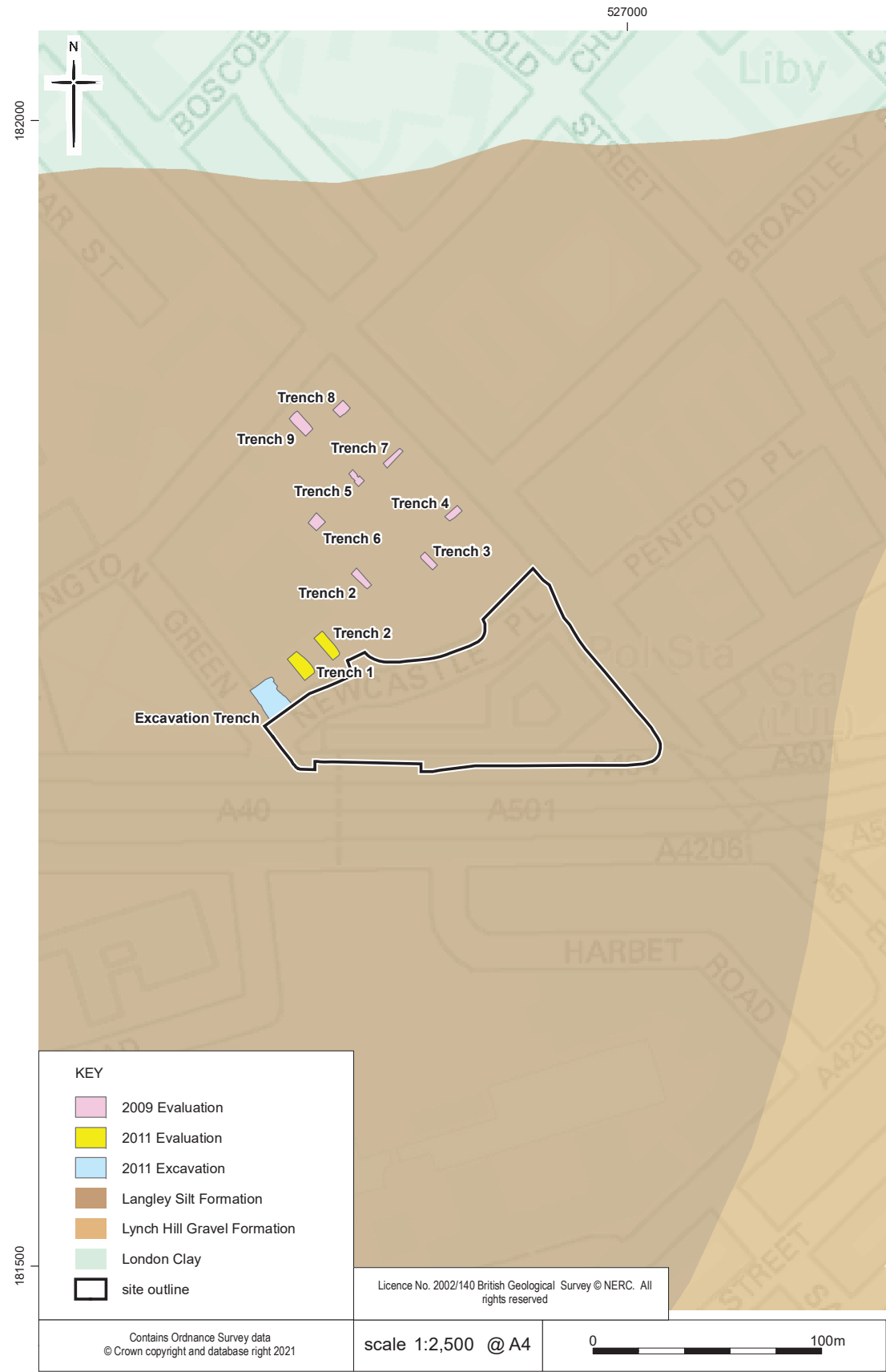


Fig 3 Geology of the site and past investigation trenches



Fig 4 Brasiel's map of 1742

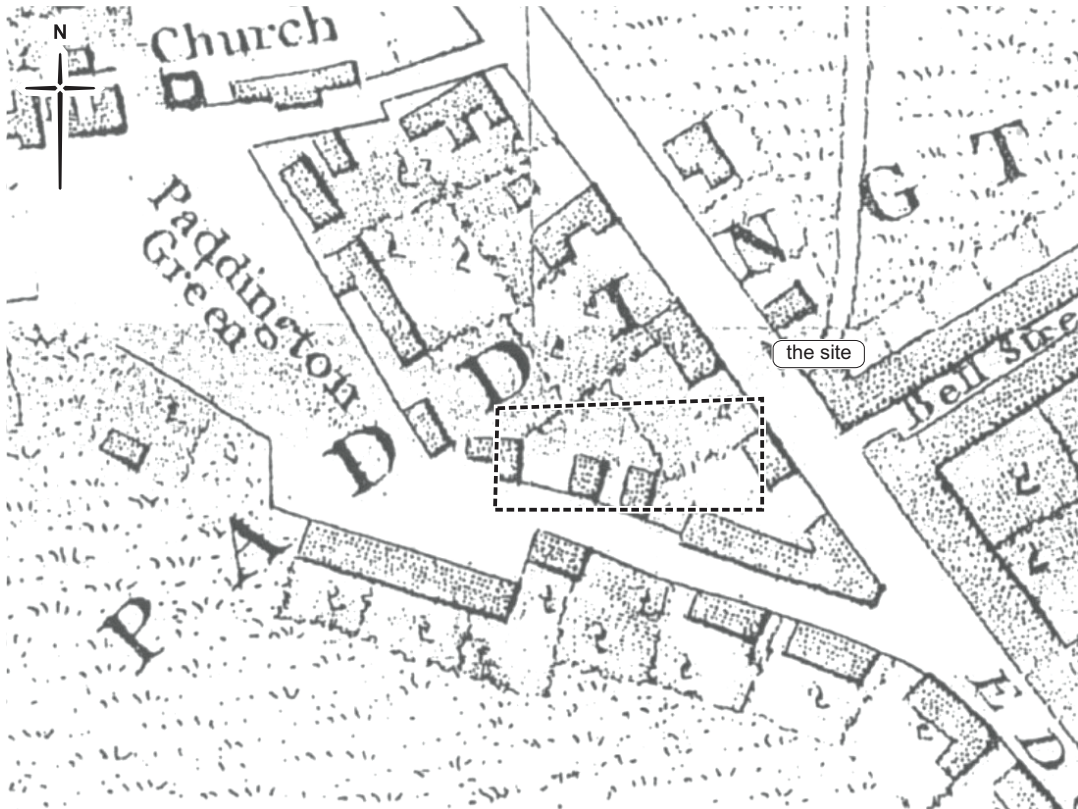


Fig 5 Morgan's map of 1682



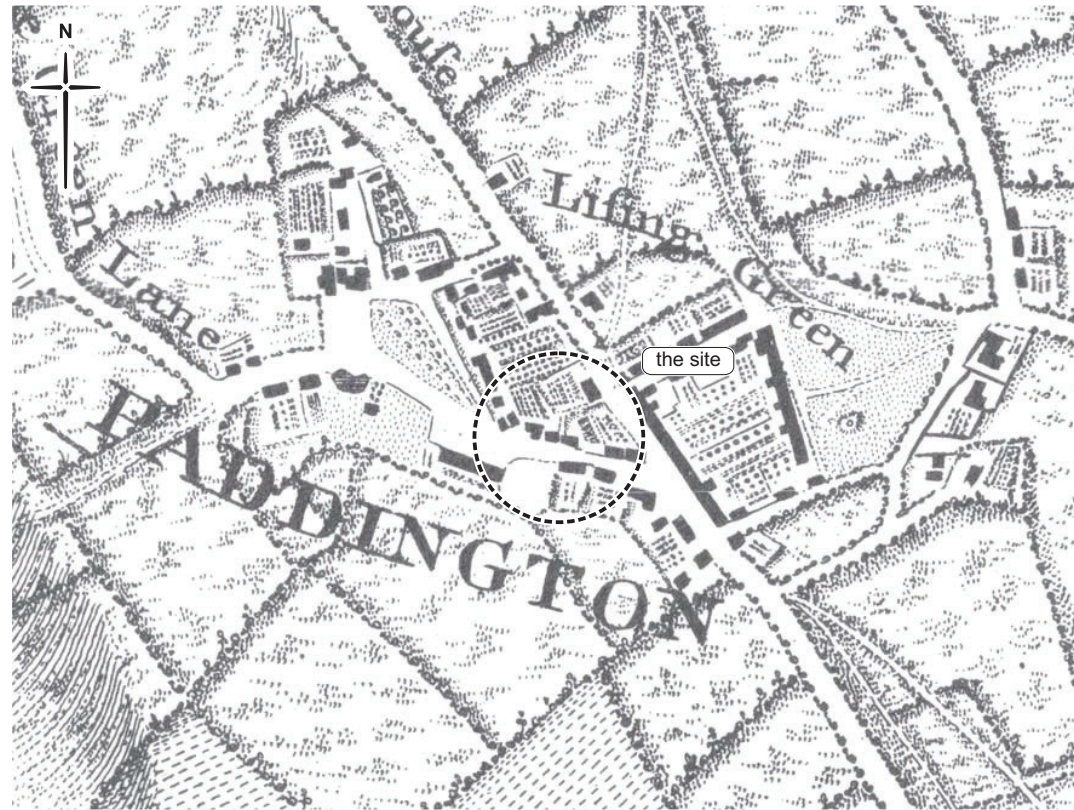


Fig 6 Rocque's map of 1746

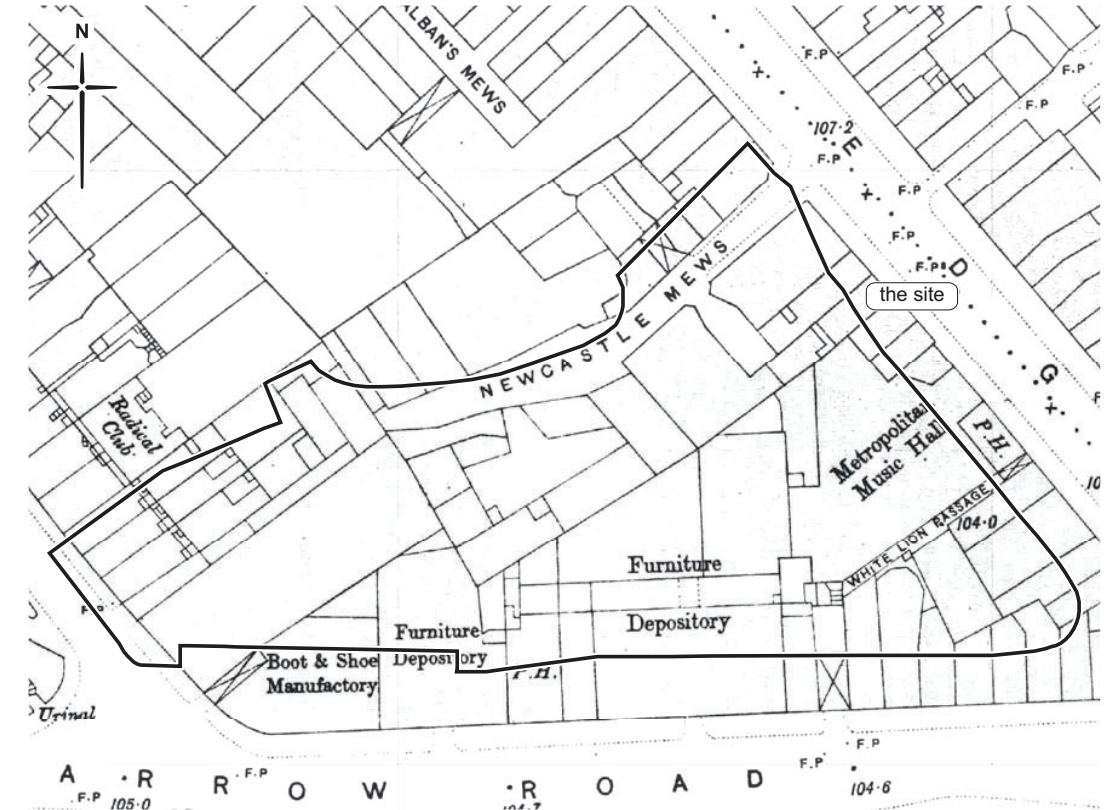


Fig 8 Ordnance Survey 2nd edition 5':mile map of 1896

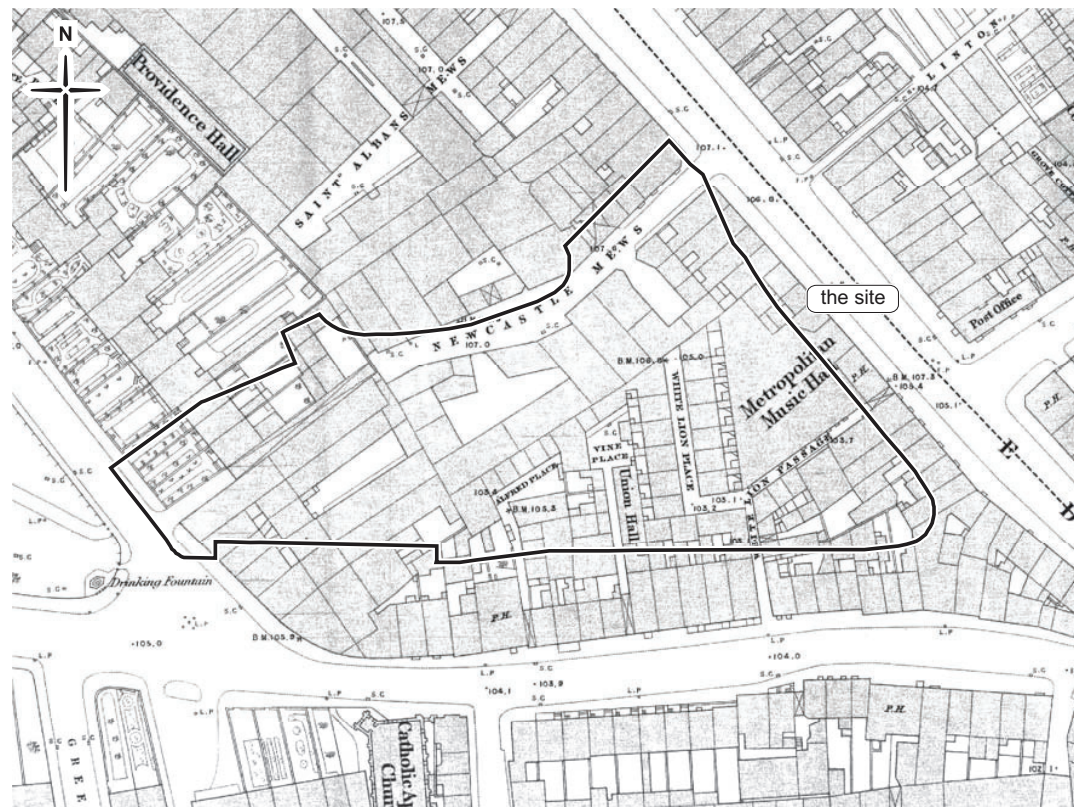


Fig 7 Ordnance Survey 1st edition 5':mile map of 1868

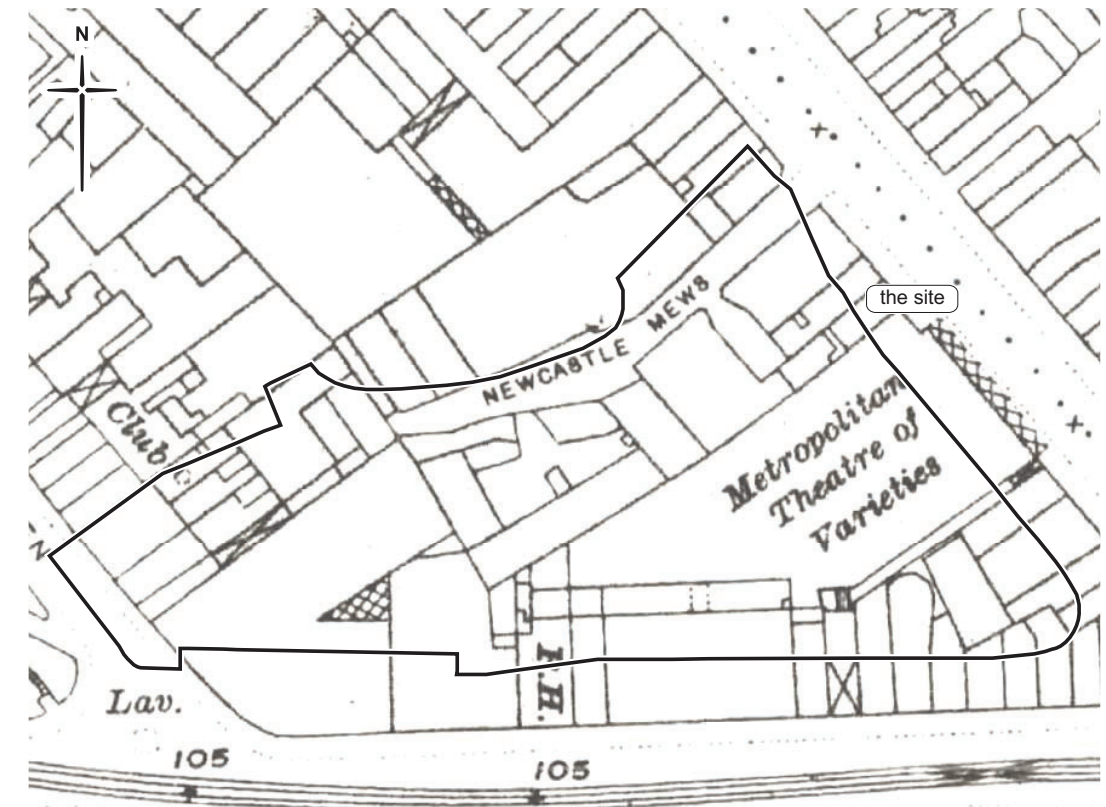


Fig 9 Ordnance Survey 3rd edition 25'':mile map of 1915-16



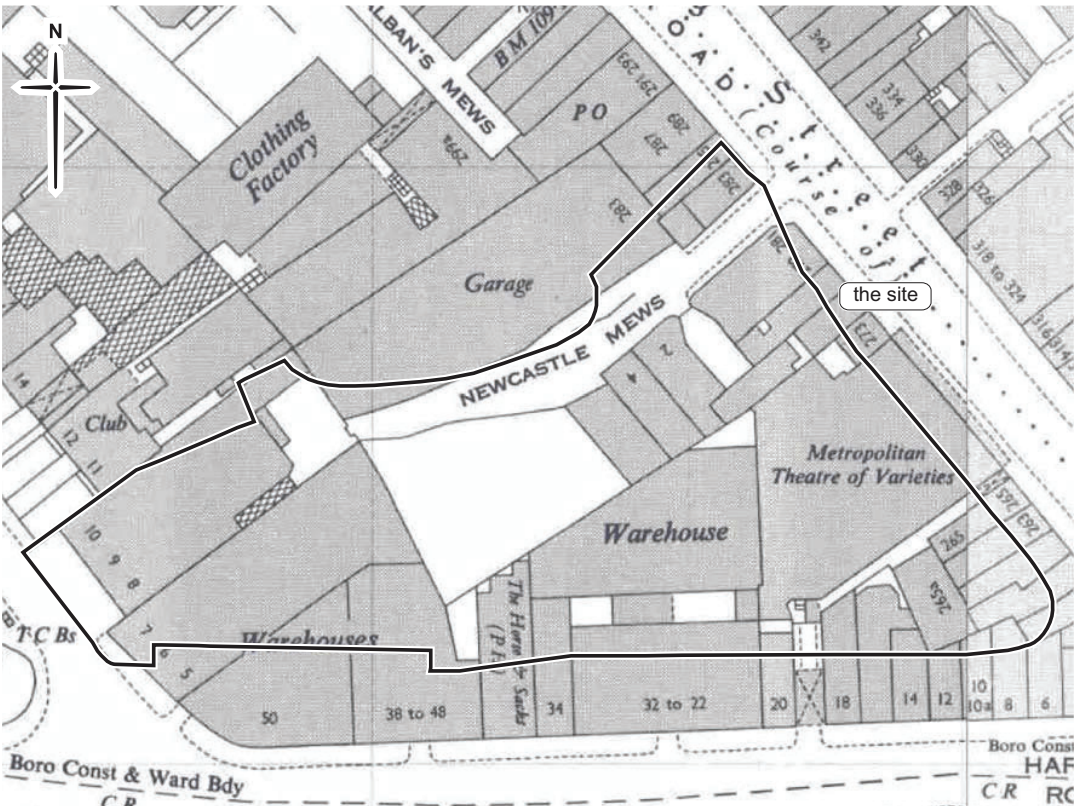


Fig 10 Ordnance Survey 1:1250 scale map of 1952-53

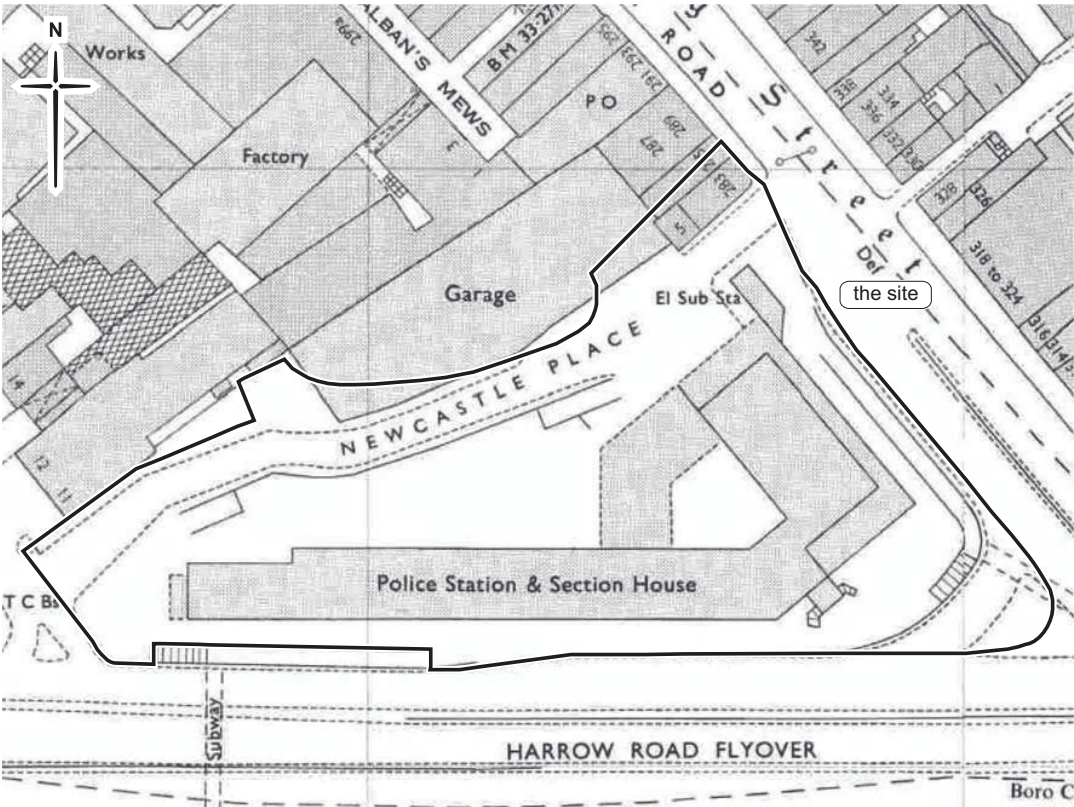


Fig 11 Ordnance Survey 1:1250 scale map of 1969-72

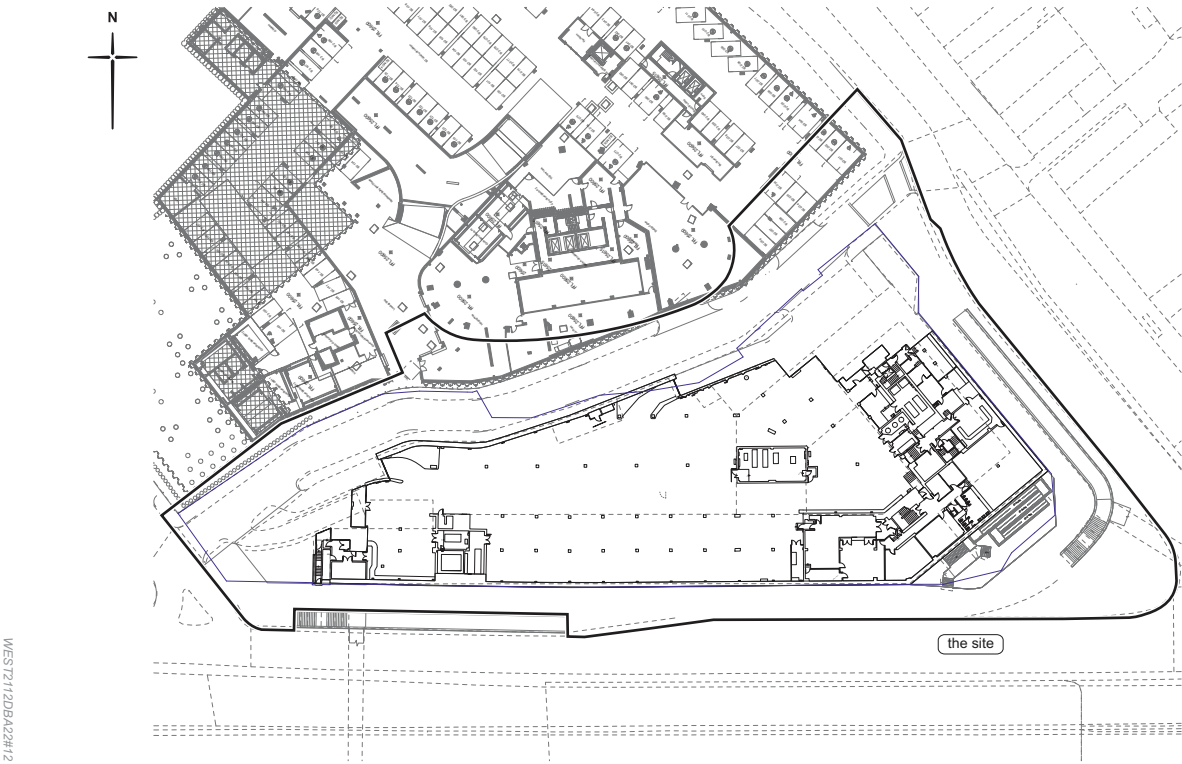


Fig 12 Existing Basement Plan, 15044-SQP-ZZ-B1-DP-A-PL01002, Rev. P1; 07/10/2020



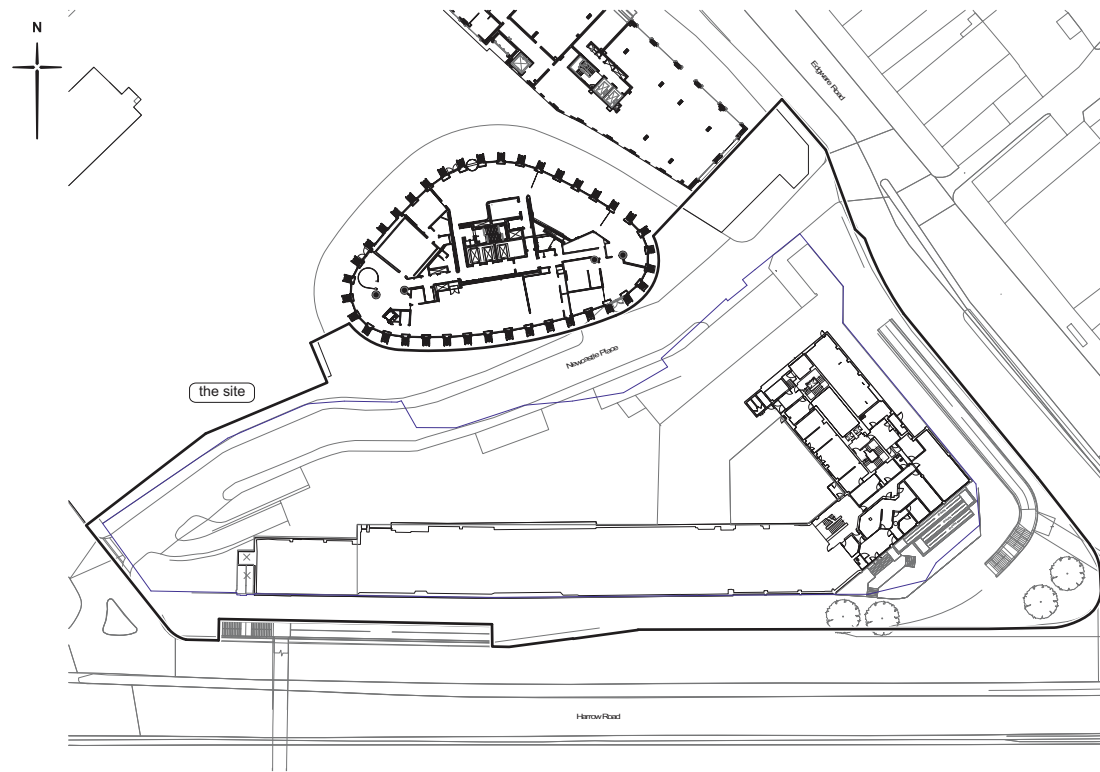


Fig 13 Existing Ground Floor Plan, 15044-SQP-ZZ-00-DP-A-PL01003, Rev. P1; 07/10/2020

WEST1120BA22H13

Replacement Archaeological Desk Based Assessment MOLA 2022

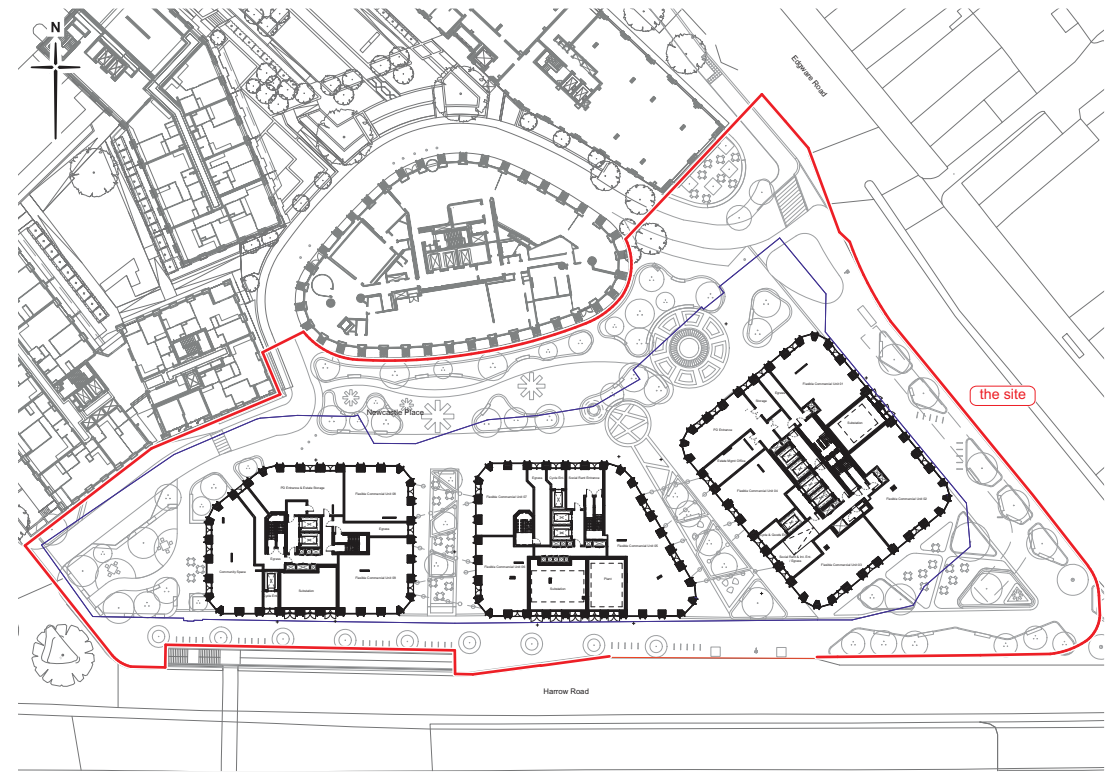


Fig 14 Proposed Ground Floor Plan, 15044-SQP-ZZ-00-DP-A-PL01104, Rev P3, 18/11/2022

WEST1120BA22H14

Replacement Archaeological Desk Based Assessment MOLA 2022